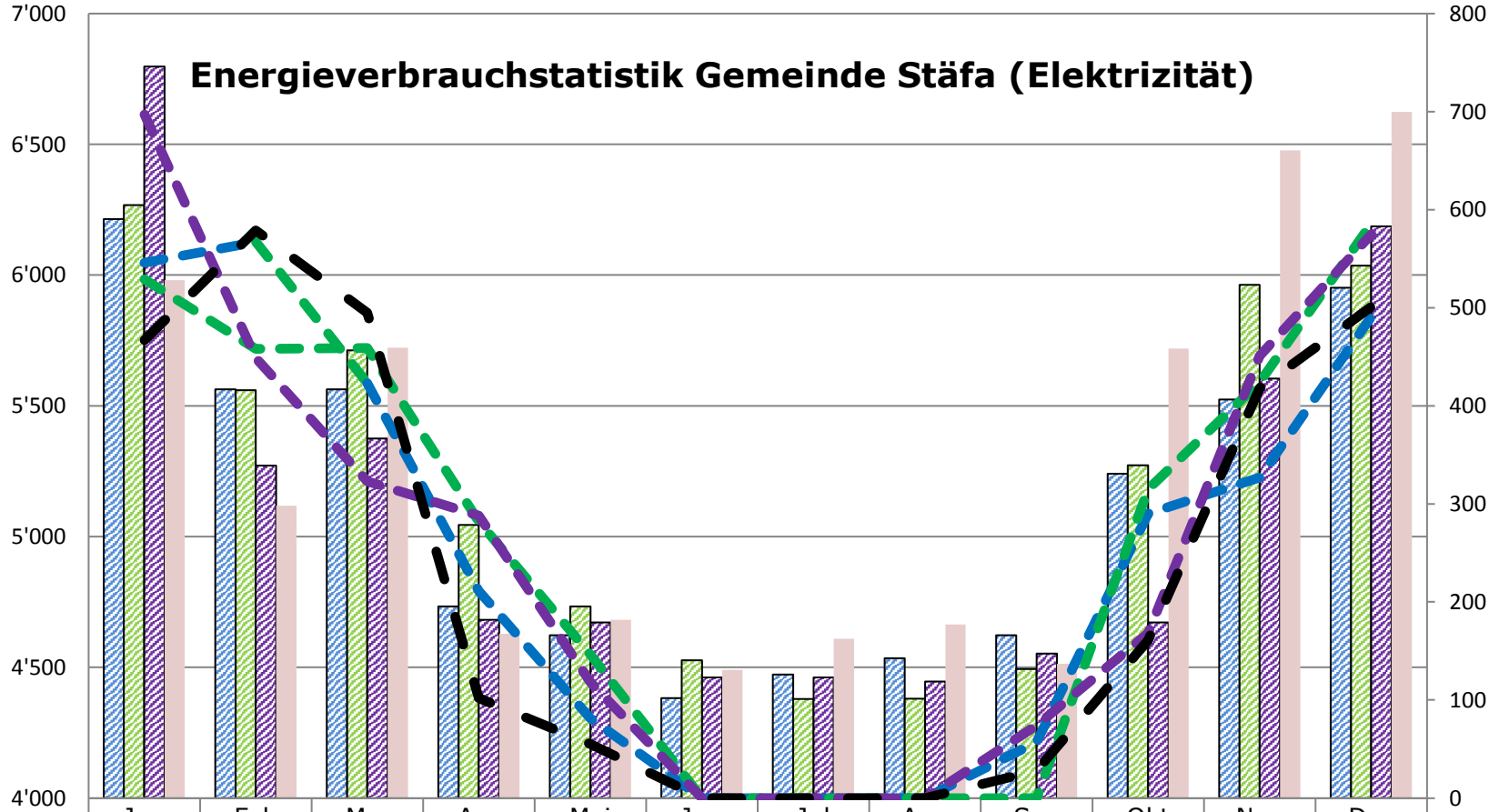


## Energieverbrauchstatistik Gemeinde Stäfa (Elektrizität)

Energieverbrauch in MWh

Heizgradtage HGT



	Jan	Feb	Mrz	Apr	Mai	Jun	Jul	Aug	Sep	Okt	Nov	Dez
2015 in MWh	6'214.5	5'563.3	5'562.4	4'732.8	4'622.7	4'382.2	4'472.7	4'535.0	4'622.7	5'240.0	5'523.8	5'951.6
2016 in MWh	6'268.0	5'560.2	5'711.6	5'044.3	4'732.8	4'527.2	4'378.9	4'379.8	4'493.4	5'273.0	5'962.8	6'035.7
2017 in MWh	6'797.0	5'271.0	5'375.0	4'682.0	4'672.0	4'461.0	4'461.0	4'446.0	4'552.0	4'672.0	5'604.0	6'186.0
2018 in MWh	5'980.0	5'118.0	5'722.0	4'628.0	4'681.0	4'490.0	4'609.0	4'664.0	4'513.0	5'719.1	6'477.2	6'623.2
HGT 2015	546	567	423	211	81	0	0	0	57	290	327	491
HGT 2016	529	458	459	282	146	0	0	0	0	315	424	586
HGT 2017	697	449	323	288	118	0	0	0	74	168	451	575
HGT 2018	467	579	495	102	55	0	0	0	28	161	418	501